



RECP #: 752611

RECORDED 5/8/2019 AT 1:07 PM BK# 2620 PG# 1653  
Debra K. Lee, CLERK OF LARAMIE COUNTY, WY PAGE 1 OF 1

# STATE OF WYOMING CORNER RECORD

(In compliance with the CORNER PERPETUATION AND FILING ACT, Wyoming Statutes, 1997 Section 33-29-140, et. seq., and the Rules and Regulations of the Board of Registrations for Professional Engineers and Professional Land Surveyors)

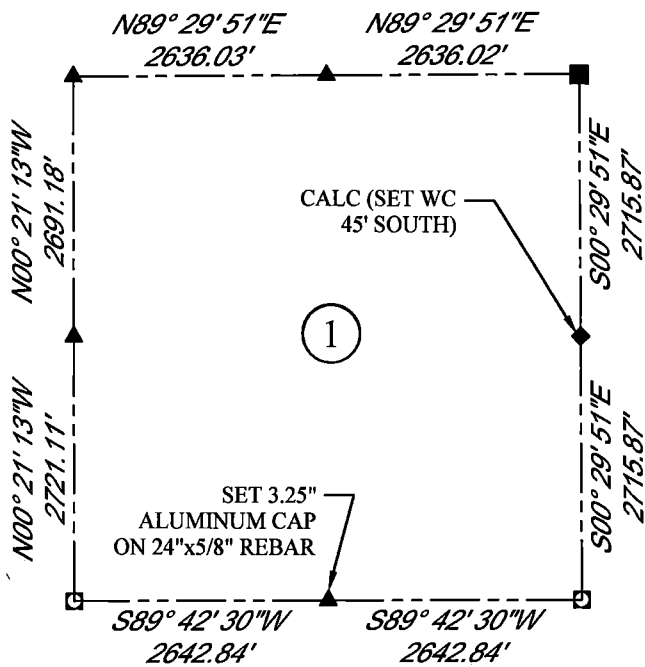
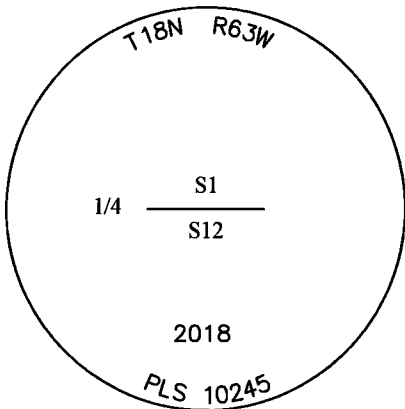
## SOUTH QUARTER CORNER SECTION 1, T. 18 N., R. 63 W., 6TH P.M., LARAMIE COUNTY, WYOMING

**GLO:** SET A SANDSTONE 15X12X3, 10 IN. DEEP MARKED 1/4 ON THE N. SIDE FOR 1/4 SEC. CORNER.

**SET:** 3.25" ALUMINUM CAP, 2' ON NORTH SIDE OF E-W FENCE LINE, MARKED AS SHOWN. PLACED A MOUND OF STONES IN FENCE LINE ON SOUTH SIDE OF CORNER.



SCALE: 1" = 2000'  
NORTH DETERMINED BY  
G.P.S OBSERVATIONS



### LEGEND:

- FOUND BLM CAP
- FOUND USFS CAP
- FOUND STONE
- FOUND PRIVATE MONUMENT
- ◆ CALCULATED POSITION
- ▲ SET MONUMENT (LS10245)
- SECTION LINE

DATE OF FIELD WORK: 08/28/2018 OFFICE REFERENCE: 746049 ----

### CROSS INDEX DIAGRAM

	1	2	3	4	5	6	7	8	9	10	11	12	13	14	15	16	17	18	19	20	21	22	23	24	25	
A																										
B																										
C			6		5			4			3			2							1					
D																										
E																										
F																										
G			7		8			9			10			11							12					
H																										
J																										
K																										
L			18		17			16			15			14							13					
M																										
N																										
O																										
P			19		20			21			22			23							24					
Q																										
R																										
S			30		29			28			27			26							25					
T																										
U																										
V																										
W																										
X			31		32			33			34			35							36					
Y																										
Z																										
	1	2	3	4	5	6	7	8	9	10	11	12	13	14	15	16	17	18	19	20	21	22	23	24	25	

WOOD  
2615 AVIATION DRIVE  
SHERIDAN, WY 82801  
PH: 307-675-6400

# wood.

THIS CORNER RECORD WAS  
PREPARED BY ME OR UNDER  
MY DIRECTION AND  
SUPERVISION,  
SEAL AND SIGNATURE

